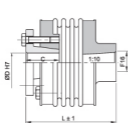
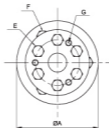




Patented



搭配 Fanuc motor



- Easy to assemble ■ 容易組裝
- High clamping forces, due to conical sleeves ■ 因圓錐形套筒所以夾持力高

SPECIFICATION:

TYPE BK4

		60-F11	60-F14	60-F16	80-F16	150-F16
Nominal torque (Nm) T_N	正常扭矩	60	60	60	80	150
Weight (kg) m	重量	0.6	0.8	0.8	1.2	1.2
Moment of inertia (10^{-3} kgm ²) J	慣性力矩	0.4	0.4	0.4	0.8	0.8
Torsional stiffness (10^3 Nm/rad) C_{tw}	扭轉剛性	55	55	55	85	85
Max. radial misalignment (mm) Δkr	容許徑向偏差	0.2	0.2	0.2	0.2	0.2
Max. axial misalignment (mm) Δka	容許軸向偏差	0.5	0.5	0.5	0.5	0.5
Tightening torque of retaining screws (Nm) M_k	鎖緊扭力	M5/8	M5/8	M5/8	M6/10	M6/10
Max. rotating speed (rpm)	最高轉速	9100	9100	9100	7000	7000
$L \times 1$		57	64	72/82	74/84	75/85
$\varnothing A$		66	66	66	81	81
C		27	27	27	32	32
$\varnothing D1$	min.	12	12	12	16	16
	max.	25	25	25	38	38
E		6xM5	6xM5	6xM5	6xM6	6xM6
F		3xM5	3xM5	3xM5	3xM5	3xM5
G		3xM5	3xM5	3xM5	3xM6	3xM6
I cone (Fanuc Motor)		11	14	16	16	16

ORDERING EXAMPLE:

聯軸器系列 Coupling series	型號 Size	總長 Length	完成孔直徑 Finished bore diameter D(mm)
BK4	150	85	Ø25 - F16