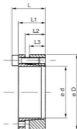


- **Ma** → screw tightening torque (Nm)
- **Mt** → transmissible torque (with Fax = 0) (Nm)
- **Fax** → axial force (with Mt = 0) (kN)
- **Ps** → specific pressure on shaft (N/mm²)
- **Ph** → specific pressure on hub (N/mm²)

- **Ma** → 螺絲鎖緊扭矩 (Nm)
- **Mt** → 傳遞扭矩 (Nm)
- **Fax** → 軸向壓力 (kN)
- **Ps** → 軸面負荷壓力 (N/mm²)
- **Ph** → 軸殼面負荷壓力 (N/mm²)



SPECIFICATION:

TYPE JDS

Dimensions					Screws			Performances			
d x D	L	L1	L2	L3	Size	Ma	Mt	Fax	Ps	Ph	
20 x 47	34	28	22	17	M6	17	380	38	295	125	
22 x 47	34	28	22	17	M6	17	410	38	270	125	
24 x 50	34	28	22	17	M6	17	450	38	245	120	
25 x 50	34	28	22	17	M6	17	570	46	285	140	
28 x 55	34	28	22	17	M6	17	630	46	255	130	
30 x 55	34	28	22	17	M6	17	660	46	235	130	
32 x 60	34	28	22	17	M6	17	970	60	295	155	
35 x 60	34	28	22	17	M6	17	1,060	60	270	155	
38 x 65	34	28	22	17	M6	17	1,150	60	250	145	
40 x 65	34	28	22	17	M6	17	1,210	60	235	145	
42 x 75	41	33	25	20	M8	41	2,050	98	300	170	
45 x 75	41	33	25	20	M8	41	2,200	98	290	170	
48 x 80	41	33	25	20	M8	41	2,350	98	270	160	
50 x 80	41	33	25	20	M8	41	2,450	98	260	160	
55 x 85	41	33	25	20	M8	41	3,080	112	270	175	
60 x 90	41	33	25	20	M8	41	3,360	112	245	165	
65 x 95	41	33	25	20	M8	41	4,090	126	255	175	
70 x 110	50	40	30	24	M10	83	6,300	179	280	180	
75 x 115	50	40	30	24	M10	83	6,700	179	260	170	
80 x 120	50	40	30	24	M10	83	7,150	179	250	170	
85 x 125	50	40	30	24	M10	83	8,500	200	260	180	
90 x 130	50	40	30	24	M10	83	9,100	200	250	170	
95 x 135	50	40	30	24	M10	83	10,800	224	260	180	
100 x 145	56	44	32	26	M12	145	13,400	268	270	190	
110 x 155	56	44	32	26	M12	145	14,800	268	240	180	
120 x 165	56	44	32	26	M12	145	17,900	298	250	180	
130 x 180	64	54	40	34	M12	145	26,000	400	240	170	
140 x 190	68	54	40	34	M14	230	27,000	384	210	150	
150 x 200	68	54	40	34	M14	230	33,000	440	230	170	
160 x 210	68	54	40	34	M14	230	38,000	479	230	170	

ORDERING EXAMPLE:

型式 Type	尺寸 Size (d x D)
JDS	50 x 80